



Wyndham Park  
Nursery School

# Our Christmas Newsletter 2023

Dear Parents,

As we approach the end of a very busy second term I would like to take this opportunity to thank you for all of your ongoing support.

The children have settled so well in to school and their attitude to learning is fantastic. We have loved watching them develop in both skills and confidence amazingly over the term.



I hope you and your family have an enjoyable Christmas filled with fun and family times and a successful 2024 to follow.

Laura Cook  
Head Teacher

### Emergency closure procedure



As the weather has started to get colder I would just like to remind you of our emergency closure procedure. Whenever possible we will try and keep the school open, but if road conditions are dangerous then we will make a decision in the interests of safeguarding both pupils and staff, to shut the school. If conditions deteriorate throughout the course of the day and a decision is taken to close the school we will get in touch with parents as soon as we can. So that we can get information out to you as quickly as possible, please can you make sure that you let the office know of any changes to phone numbers or email addresses. Please also make sure you follow us on Facebook or Twitter as we can get information to you really quickly this way.

### Christmas Cards

If your child would like to send a Christmas card to their friends this year, can we please ask that you only send **ONE** card, addressed to the whole class or nursery, which we will then display in the classrooms for everyone to see. Thank you.



## Christmas Sing & Sign-along! - Wednesday 13th December

As you hopefully will know, the children have been learning Christmas songs in our regular music sessions with Rattle & Roll (Adventurers only) and within the classrooms. We thought it would be lovely to hold a short, outdoor informal event so that the children can share what they have been learning with their families.

We are inviting children and their families to come back to nursery at 4.30pm (through Gate 1) on Wednesday 13th December. We will have mince pies available for grown-ups and for the children there will be a cake, both for donations of 50p each for School Fund. Please note, we do not keep any cash in school so please bring the correct change!

At about 4.45pm, we will ring a bell to signal that the Sing & Sign-along will begin. There is no need for the children to come to the front and sing the songs as this can be very overwhelming and will likely result in silent singing! So please stay together as your family and show us your Christmas Spirit by joining in with the singing, not forgetting the actions and signing!

This will be an outdoor event (hopefully!!!) with lots of twinkling lights, so please dress warmly!

The list of songs is below and we will send the links to the YouTube videos for each song in an email, in case you would like to practise them at home!

**Jingle Bells**

**When Santa got stuck up the chimney**

**Twinkle Twinkle Little Star**

**Everybody be a Christmas tree**

**We wish you a Merry Christmas**



## Christmas Party & End of Term

Our last day of normal nursery sessions before the Christmas Holidays is  
Tuesday 19th December.

### Wednesday 20th December is our Christmas Party morning!

We are inviting all children to attend nursery for the morning session  
(8.30am-11.30am) for a Christmas Party. There will be dancing, games  
and some party snacks! We will send out a booking form separately to  
book your child in for this party session.

Please note that Nursery will be closing at 11.30am on this day.  
There will be no full day sessions or after school club on this day.



We might even see a  
special visitor at nursery!!! Shhh!

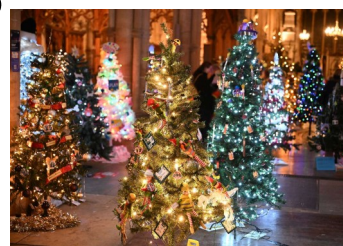
### St. Wulfram's Christmas Tree Festival

St. Wulfram's church are holding their Christmas Tree Festival again this  
year and we have signed up for a tree.

All of the children have been busy making baubles and garlands to  
decorate our nursery tree!

The festival opens on Tuesday 28th November at 6pm, and will be open  
until Sunday 3rd December. It would be a lovely event to visit as a  
family to see everyone's Christmas Tree and try to  
spot the Wyndham Park Nursery School Tree!

Entrance is free for children under 16 and £3 adults.





## Christmas Jumper Day

We are having our Christmas Jumper day on Friday 15th December 2023.

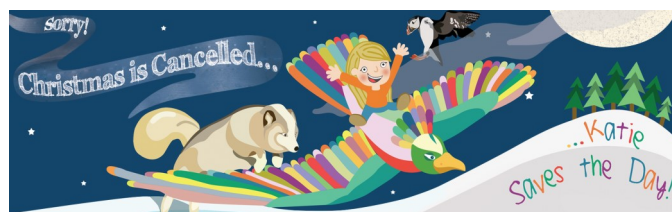
Children can come to nursery in their favourite Christmas jumpers, or they could decorate an old jumper or top they already have! Please do not feel like you have to go out and spend money on a new jumper just for this event!

We will be sending out the link to our JustGiving page if you would like to donate to the Save the Children.



## Christmas Show - Adventurers

We are super excited to announce that on Friday 15th December, the Topsy Turvy Theatre Company will be returning to perform our Christmas Show this year! The group will be performing 'Sorry, Christmas is cancelled...Katie saves the day!' using lovely puppets. The show will last approximately an hour.



If your child does not normally attend on a Friday morning (8.30-11.30am), and you would like them to come to watch the Christmas Show, you MUST BOOK their session by contacting the school office by Thursday 7th December.

## Car Park

Our nursery car park is for **staff use only**. There is car parking available in the main Wyndham Park car park.

Breakfast Club drop offs **before 8am** and After School club collections **after 4pm** may use the nursery car park. Thank you for your cooperation.

## Outdoor Learning

We are learning all the time! Sometimes this means we will get a bit messy! We go outside whatever the weather, so we need warm clothes and coats that are ok to get dirty and wet!

The nursery uniform is designed to get messy so that favourite clothes don't get ruined! We have paint, water and other messy activities out everyday so wearing old clothes or uniform is a very good idea!!!

If you would like to bring your own wellies and waterproofs, please label them clearly with your child's name and they can be left at nursery to be used everyday!



## Late arrivals

Please could we kindly ask that all children are in nursery for the **start** of their session (no later than 8.45am). Late arrivals are unsettling for *all* of our children. It also means that unfortunately your child may miss their morning 'welcome session' with their key worker which is a really important start to their day.

*Thank you for your understanding.*

## **\*\* Applications for a Primary School Place - September 2023\*\***

If your child was born between 1st September 2019 and 31st August 2020, you can apply for their Primary School place now.

Please also be aware that the deadline for applying for a reception place in a primary school for September 2023 is **12:00 noon** on **15th January 2024**.

**Important things to remember when applying:**

- You can apply for up to **three** different schools. You must rank the schools in order of preference. The first school should be the one you would most like your child to go to.
- If you apply after the closing date you are less likely to get a place at one of your preferred schools.
- It is your responsibility to apply for a primary school place for your child, we do not apply for you and we are not linked to any specific schools.

It is really important that you apply online at:

[www.lincolnshire.gov.uk/schooladmissions](http://www.lincolnshire.gov.uk/schooladmissions) or contact the Education Team on 01522 782030.

**Lincolnshire**  
COUNTY COUNCIL 

## **Funding**

Just a reminder that if you are claiming the 30-hour funding or using Tax-Free Childcare, you will need to reconfirm your eligibility **every 3 months**.

Parents can check whether they could be eligible for a range of government childcare offers, including the new 15 hours free funding for 2 year old's & 30 hours free funding for 3-4 year old's via Childcare Choices at [www.childcarechoices.gov.uk](http://www.childcarechoices.gov.uk)

For a detailed guide to the 30 hours eligibility criteria, visit <https://www.gov.uk/government/publications/30-hours-free-childcare-eligibility>

**Childcare**  
**Choices** 

Dates for your diary

Wednesday 13th December - Christmas Sing & Sign-a-long!

Friday 15th December - Christmas Jumper Day!

Friday 15th December - Adventurers Class - Topsy Turvy  
Theatre show

Wednesday 20th December - **Christmas Party Morning!**



- Last day of Term 2. Nursery closing at  
11.30am

Merry Christmas!!!!

Thursday 4th January 2024 - First day back! Term 3

Monday 15th January 2024 - Deadline for Primary  
School Applications

Friday 9th February 2024 - Last day of Term 3



Wyndham Park  
Nursery School

Wyndham Park Nursery School  
Hill Avenue  
Grantham  
Lincolnshire  
NG31 9BB

Phone: 01476 563966

E-mail: [enquiries@wyndhampark.lincs.sch.uk](mailto:enquiries@wyndhampark.lincs.sch.uk)

Web: [www.wyndhampark.lincs.sch.uk](http://www.wyndhampark.lincs.sch.uk)

**EXCITE ENGAGE EDUCATE**